

测试报告

编号: SDHL1704005522FT

日期: 2017-04-17

页码: 第 1 页共 3 页

佛山市顺德区汤米妮琪家具有限公司
广东省佛山市顺德区龙江镇龙峰工业区北二路三号

以下测试之样品是由申请者所提供及确认:

产品名称 : 板材
SGS 参考编号 : CAN17-055209
到样日期 : 2017-04-01
检验日期 : 2017-04-01 至 2017-04-14

测试结果总结

测试要求	测试结果	备注
GB 18580-2001 —室内装饰装修材料-人造板及其制品中甲醛释放限量	-	/
甲醛释放量	E1	/
详细的测试结果请看附页		

通标标准技术服务有限公司
顺德分公司
授权代表签署



Bill Wang 汪国琴
批准签署人

Unless otherwise agreed in writing, this document is issued by the Company subject to its General Conditions of Service printed overleaf, available on request or accessible at <http://www.sgs.com/en/Terms-and-Conditions.aspx> and, for electronic format documents, subject to Terms and Conditions for Electronic Documents at <http://www.sgs.com/en/Terms-and-Conditions/Terms-e-Documents.aspx>. Attention is drawn to the limitation of liability, indemnification and jurisdiction issues defined therein. Any holder of this document is advised that information contained hereon reflects the Company's findings at the time of its intervention only and within the limits of Client's instructions, if any. The Company's sole responsibility is to its Client and this document does not exonerate parties to a transaction from exercising all their rights and obligations under the transaction documents. This document cannot be reproduced except in full, without prior written approval of the Company. Any unauthorized alteration, forgery or falsification of the content or appearance of this document is unlawful and offenders may be prosecuted to the fullest extent of the law. Unless otherwise stated the results shown in this test report refer only to the sample(s) tested and such sample(s) are retained for 30 days only.

SDHL 126156

测试报告

编号: SDHL1704005522FT

日期: 2017-04-17

页码: 第 2 页共 3 页

测试结果:

测试样品描述:

样品编号	SGS 样品 ID	描述
SN1	CAN17-055209.001	棕色和白色 MDF 表面

注释:

- (1) 1 mg/kg = 0.0001%
- (2) MDL = 方法检测限
- (3) ND = 未检出 (< MDL)
- (4) "-" = 未规定

甲醛

测试方法: 参考 GB 18580-2001 章节 6.3, 用 UV-Vis 分析。

测试项目	限值	单位	MDL	001
甲醛释放量	**	mg/L	0.2	ND

注释:

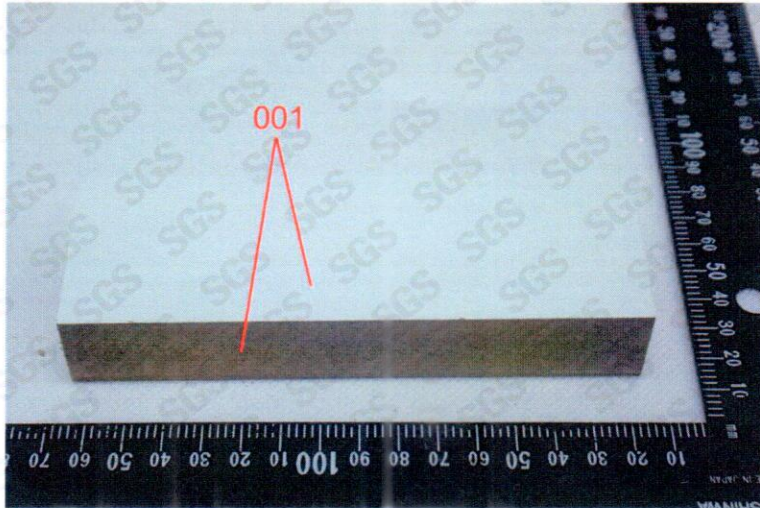
- (1) **参考信息:
等级 E1: 甲醛释放量 ≤ 1.5 mg/L

Attention: To check the authenticity of testing / inspection report & certificate, please contact us at telephone: (86-755)93071443, or email: CN.Doccheck@sgs.com



Unless otherwise agreed in writing, this document is issued by the Company subject to its General Conditions of Service printed overleaf, available on request or accessible at <http://www.sgs.com/en/Terms-and-Conditions.aspx> and, for electronic format documents, subject to Terms and Conditions for Electronic Documents at <http://www.sgs.com/en/Terms-and-Conditions/Terms-e-Documents.aspx>. Attention is drawn to the limitation of liability, indemnification and jurisdiction issues defined therein. Any holder of this document is advised that information contained hereon reflects the Company's findings at the time of its intervention only and within the limits of Client's instructions, if any. The Company's sole responsibility is to its Client and this document does not exonerate parties to a transaction from exercising all their rights and obligations under the transaction documents. This document cannot be reproduced except in full, without prior written approval of the Company. Any unauthorized alteration, forgery or falsification of the content or appearance of this document is unlawful and offenders may be prosecuted to the fullest extent of the law. Unless otherwise stated the results shown in this test report refer only to the sample(s) tested and such sample(s) are retained for 30 days only.

样品照片:



备注: 此测试分包到 SGS 其他具资格实验室进行。

报告结束

Attention: To check the authenticity of testing / inspection report & certificate, please contact us at telephone: (86-755)83071443, or email: CN.Doccheck@sgs.com



Unless otherwise agreed in writing, this document is issued by the Company subject to its General Conditions of Service printed overleaf, available on request or accessible at <http://www.sgs.com/en/Terms-and-Conditions.aspx> and, for electronic format documents, subject to Terms and Conditions for Electronic Documents at <http://www.sgs.com/en/Terms-and-Conditions/Terms-e-Documents.aspx>. Attention is drawn to the limitation of liability, indemnification and jurisdiction issues defined therein. Any holder of this document is advised that information contained hereon reflects the Company's findings at the time of its intervention only and within the limits of Client's instructions, if any. The Company's sole responsibility is to its Client and this document does not exonerate parties to a transaction from exercising all their rights and obligations under the transaction documents. This document cannot be reproduced except in full, without prior written approval of the Company. Any unauthorized alteration, forgery or falsification of the content or appearance of this document is unlawful and offenders may be prosecuted to the fullest extent of the law. Unless otherwise stated the results shown in this test report refer only to the sample(s) tested and such sample(s) are retained for 30 days only.